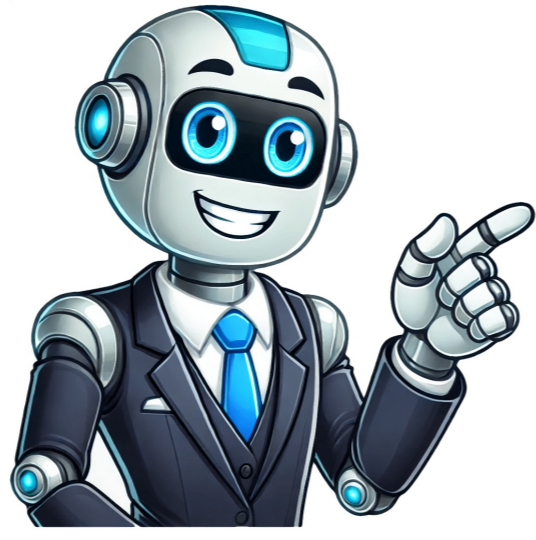


Continue

































×Sorry to interruptCSS Error You may want to program Liftmaster to your car without a remote but wonder how to go about it. Fortunately, we have done some research for you, and here is what we found. The following are step-by-step guides for programming Liftmaster to a car without a remote: Locate the Liftmaster control panel Understand the control buttons Restore the Liftmaster's default setting Program the new button Test the button Cars with a factory-installed HomeLink button can be programmed to operate the LiftMaster garage door opener. This means you won't need a remote anymore. Keep reading to get detailed information on how to program Liftmaster to a car without a remote. How To Program Liftmaster To My Car Without A Remote [Step-By-Step Guide] The HomeLink button that comes standard on your vehicle is compatible with the Liftmaster garage door opener. As a result, it is possible to program it to open your Liftmaster garage door. Controlling Liftmaster garage door openers and gate operators is made easier and more convenient thanks to HomeLink's connectivity capabilities. When it comes to certain automobiles, a Compatibility Bridge is essential for carrying out the correct programming of the HomeLink system to the entire line of Liftmaster products. Programming a HomeLink vehicle button to work with the LiftMaster garage opener is a simple task that can be completely carried out in just a few minutes. The steps involved are as follows: Step 1: Locate The Liftmaster Control Panel The first thing you should do is examine and become familiar with the make and model of your garage door opener. You may determine the model of your Liftmaster and learn the locations of its buttons by consulting the user manual for the device. Additionally, search for the HomeLink buttons that are pre-installed in your vehicle. It is necessary to check the keypad to see if there is a button labeled "program," "learn," or another button with a similar function. Keep in mind that the location of these buttons is typically found above the seat of the driver. Each car model is designed differently, and the buttons may differ. Step 2: Understand The Control Buttons Now that you know where the control button for your Liftmaster garage door opener model is located, you need to examine it to see what each button is used for. If you want to see the most essential information regarding your controller, the user manual that came with your garage door opener is the best thing to consult. The control panel for your garage door will probably include a button labeled "program" or "learn code" on it. The objective is to clear out any previously programmed settings and enter new ones. However, before you begin, you need to understand the keys clearly. Step 3: Restore The Liftmaster's Default Setting Now is the time to go into your vehicle and delete any old memories stored in the buttons on your dashboard. This is to restore the default settings on your Liftmaster. To accomplish this, press and hold the first button on your panel while simultaneously pushing and holding the third button too for a few seconds. The LED light, typically red, will turn on when you continue holding the buttons down. Maintain pressure on the button until the LED light begins to blink. This process can take anywhere from 5 to 20 seconds to complete, depending on the type and model of your Liftmaster. You should release your grip on the buttons as soon as you observe the light flashing. After this, you have successfully reset that memory to default. Step 4: Program The New Button Now, go inside your garage and look for the control for the garage door. You should look for a button that says either "program" or "learn code." You can usually find them on the back side of your garage door opener. Once you have located the button in question, press it, and a LED light will begin flashing after it has been activated. After this, you have around 30 seconds to complete the process. Go inside your vehicle and hit the button that has been programmed three times. Your garage door opener should be connected to that button once you accomplish this. When you have finished doing this, the garage door should begin to close. Ensure that your vehicle is the appropriate distance away from the garage doors for them to function properly. Step 5: Test The Button After you have finished all the steps involved in the programming process, it is time to test it to see whether or not everything is operating normally. Get in your vehicle, drive a short distance from your garage, and then on the way back, when you are standing in front of the garage, press the button to see if the garage door opens. If it does, you have successfully programmed your automobile to work with the Liftmaster garage door opener. Click here to view this Liftmaster garage door opener on Amazon. Can I Program Liftmaster Garage Door Opener To My Phone? Yes, you can easily program your phone to operate your garage door opener if it is compatible with Liftmaster and most modern smartphones are compatible. However, to accomplish this, you need to download the appropriate app for your smartphone, regardless of whether it is an Android device [via Google Play], an Apple device [through iOS], or a BlackBerry device. After downloading the app, you can now use the "learn" option to add the door opener to your phone. Can Nearby Interference Affect My Liftmaster Garage Door Opener? Yes. Like many other electrical appliances, a garage door opener can be affected by close-by interference. Interference on the garage door can be caused by nearby appliances, electronic devices, or even airports or electrical transformers, which might result in the door not functioning properly. Interference happens when an electrical appliance or gadget close to your property sends out signals at the same frequency as the one used by the garage opener. In highly unusual circumstances, the interference could originate from a great distance. For instance, radio equipment found at military sites and airports can cause electrical interference across a wide area. Can I Convert My Liftmaster Garage Door Opener To Wi-Fi? Yes, you can convert your garage door opener to Wi-Fi. With the assistance of a MyQ app, upgrading your garage door opener to include Wi-Fi connectivity is a simple way to improve the safety and convenience of your garage. The MyQ app provides various features that make things simpler and more convenient. Establishing a connection to myQ is a straightforward process. However, you may require assistance in installing a connection between it and Wi-Fi. You can either convert your current garage door opener to a smart one with built-in myQ connectivity or download the free myQ app and purchase a Smart Garage Hub. In order to connect your garage door opener to a Wi-Fi network, you have to take out the cover from the wall control switch and then push the "learn" button. When you reach the point in the app that tells you to press "next," the garage door opener will produce a beeping sound. Choose your garage door opener from the list of devices connected to the Wi-Fi network. Can You Get A New Garage Door Opener Remote? Yes, you can replace the remote control for your garage door opener. Replacing the remote for your garage door opener will most likely cost you between \$30 and \$40. Checking the manufacturer and model information printed on the opener's motor is the most effective way to identify the remote control compatible with your garage door opener. Whenever you need a replacement remote control, you should first check with your device manufacturer to see if they sell opener remotes. To Wrap Up If you want to program Liftmaster to your car without a remote, all you have to do is locate the Liftmaster control panel, understand the control buttons, restore the Liftmaster's default setting, program the new button, and test the button. This can be challenging to yourself so don't hesitate to call a professional. If you enjoyed reading this post, here are similar articles you may like: Liftmaster Garage Door Not Closing - What To Do? How To Program the GMC Acadia Garage Door Opener How To Program My Hyundai Genesis To Garage Door Opener Are you constantly forgetting your garage door opener? If your car has an inbuilt HomeLink button, you can program it to open your LiftMaster garage door opener. In this way, you'll never have to spend a minute figuring out where you left your garage door remote. With your HomeLink car button, you'll always be able to open the garage door anytime. It only takes a few steps to sync your HomeLink car button with your LiftMaster opener. Program Garage Door Opener in Your Car Using the HomeLink Buttons Before you start on the how-to below, you need to have a few items nearby: Find your car and garage door manual and put it near you just in case you need to consult anytime during the installation. There may be some minor differences depending on your car model. You might not need it, but it's always good to have it just in case. You need to have your garage door opener remote with you. With your manuals and your garage door opener remote next to you, let's get started 1. Park Your Car Outside of Your Garage Door Take your car out of your garage and park a few feet away from your garage door. For safety reasons, you need to have your vehicle outside of the garage to avoid the risk of carbon monoxide poisoning when you turn on your car in an enclosed space. When your car is parked outside of your garage, turn on your car's ignition. You need it to be on because the HomeLink buttons of your car need power from your vehicle to work. 2. Make sure your garage door is unobstructed Ensure any children or pets are away from the garage door while programming because the garage door may open and close during the process. 3. Locate the Vehicle Control Button The first thing you need to do is locate your HomeLink vehicle control buttons. Depending on your car's model, there are a few ways the control is integrated into your vehicle: as a HomeLink built-in mirror, visor, or module. 4. Put the Control Button in Learning Mode Press and hold the two outside buttons of your control button simultaneously for up to 20 to 30 seconds only. Make sure not to press it for more than 30 seconds because it will reset your system. Pay attention to the indicator light. You'll know you've entered learning mode when the light changes from steady to flashing. 5. Teach The Car Control Button The Frequency of the Remote Choose a button in your vehicle control button you want to use to open your garage door. Take your current garage door opener and hold it two to three inches away from your desired button. You're "pairing" the remote control and your chosen HomeLink button. Press and hold the vehicle control button and the remote control button simultaneously. Look at the indicator light. The light will change from steady to flashing when the pairing is complete. 6. Locate the Learn or Smart Button on Your Garage Door Opener This step is time-sensitive. Although you can do this by yourself, you can also call somebody to come and help you. Go to your garage and find the receiver or the motor head unit. Find the "learn" or "smart" button. You can usually locate his button near the hanging antenna wire attached to the unit. If you have difficulty finding the button, you can consult the owner's manual or read our article on the LiftMaster learn button. 7. Press Your Trained HomeLink Button in Your Car Once you've pressed the smart or learn button in your garage door, you have 30 seconds to go and press the trained button in your car for two seconds and release the button. Repeat the press-hold-release sequence up to three times to complete the training process. 8. Test it Test your newly trained car garage door opener. Programming Your HomeLink Button To Open the Garage Door Through the HomeLink App Alternatively, you can use your HomeLink Connect App to walk you through the process. Let's walk you through the basics. We'll quickly walk you through programming your HomeLink mirror and non-Bluetooth-enabled HomeLink module or visor. For the HomeLink Mirror Download the App from the App Store or Google Play Store. For Cars with the HomeLink Mirror, pair the mirror to your phone via Bluetooth. Turn on your Bluetooth option from your phone, and link your phone to the HomeLink mirror. Select a button you want to use to activate your garage door, and choose "Garage Opener." Follow the prompts to complete the installation. For Non-Bluetooth Mirrors Download the App from the App Store or Google Play Store. From your HomeLink Home screen, select the menu button. From the Menu screen, choose "Opener Programmer." Follow the step-by-step instruction to program a button or reset your HomeLink device. Need Help With Programming Your Garage Door? If you've read the manual and tried all the steps, and even Googled "LiftMaster program car" and read the results, you still can't connect your car's HomeLink button to your garage door opener, we can help. Contact our friendly team at Heritage Garage Door now. We're here if you need more help. Programming a LiftMaster opener to your vehicle can seem daunting, but it can be accomplished quickly and effectively with the correct steps and a little patience. The process varies slightly depending on whether your vehicle is equipped with HomeLink® or not. What is HomeLink®? HomeLink® is like your home's special remote control that you can access right from the comfort of your car. Think of it as your magical button that can control various devices at home, like your garage door opener, lights, or even your security gates. It's all wireless, so there's no need for additional remotes or gadgets! If you like garage door remotes and keypads for their convenience, you'll love HomeLink®. With HomeLink®, you don't need to worry about fumbling for the garage remote in the dark or leaving your home lights on when you're away - you can control all these with a simple touch of a button inside your car. It's all about making your life easier and your home more accessible, even when you're on the go! HomeLink® is compatible with most garage door openers. Need more clarification on compatibility? Check out this tool provided by LiftMaster. 3 Easy Steps to Program a LiftMaster Opener to Your Vehicle To program a LiftMaster opener to your vehicle using HomeLink®, you'll need the remote you currently have programmed to the door opener, and you'll need to move your car outside of the garage if it is not already there—park near the garage door but outside the garage. Step 1: Clearing the HomeLink® Memory Start by clearing out any previous programming in your vehicle's HomeLink® system to ensure a smooth programming process. To do this, press and hold the two outer HomeLink® buttons until the indicator light starts flashing. This usually takes about 20 seconds. Step 2: Programming the HomeLink® System Once you've cleared the memory, it's time to program the HomeLink® system. The steps may vary slightly depending on your vehicle's make and model. Your car may have three HomeLink® buttons on the mirror, visor, or overhead console®. Let's assume you want to program the HomeLink® button on your mirror. Turn on the ignition, leave your vehicle in park, and keep your foot off the pedals. Next, place the remote control garage door opener near the HomeLink® buttons on the mirror and press the button on your control that opens the garage door while simultaneously pressing the HomeLink® button you would like to program. The HomeLink® indicator light will flash slowly before becoming solid or flashing rapidly. When the indicator light is solid, the programming should be complete. If the HomeLink® light continues to flash rapidly, press the HomeLink® control button twice. The door should activate but if this does not activate your garage door, move on to step three. Step 3: Connecting to the Garage Door Opener Step 3 is time-sensitive. Read the instructions fully before you begin. Go to your garage door opener and locate the "LEARN" button. Most garage door openers installed after 2010 have a Yellow "LEARN" button on the back or side of the unit. You may need to remove or lift the lightbulb cover to reveal the button. Press the "LEARN" button on your LiftMaster opener, usually on the back or side of the unit. Immediately return to your vehicle (within 30 seconds), firmly press and hold the programmed HomeLink® button for two seconds, and release. Repeat the press/hold/release sequence up to three times to complete the programming process. Test the Connection Make sure your program is successful by pressing the HomeLink® button and waiting until your garage responds. If the process is successful, it will open immediately or close once the button is selected. For Vehicles without HomeLink® For vehicles without HomeLink®, LiftMaster offers a universal remote control that can be programmed to operate two different brand garage doors. The programming steps are: Step 1: Prepare Your Remote Start by pressing and holding the left and right buttons on the remote until the LED blinks. Step 2: Programming the Remote Press and release the button you wish to program on the remote control. Then, press and release the "learn" button on your LiftMaster garage door opener. Step 3: Finalizing the Programming Press and release the remote control button again. The garage door opener lights will blink, indicating that the car is now programmed to operate your door. Please remember that patience is key when you need to program your LiftMaster opener to your vehicle. Happy programming! Disclaimer: Always check your vehicle's user manual and the LiftMaster user manual for any specific instructions related to your model. For Further Assistance Contact Doorvana If you encounter any difficulties, don't hesitate to consult the user manual or reach out to a professional near you. Homeowners in North Texas are welcome to contact our team at Doorvana for garage door replacements or repairs. Reach us by phone at (817) 500-5988 or fill out our contact form here. Who is Doorvana? We're an industry-leading provider of garage door services in North Texas. We specialize in garage door installation, repair, and maintenance, providing exceptional service to homeowners across the region. April 18, 2025 No Comments Read More » March 16, 2025 No Comments Read More » February 19, 2025 No Comments Read More »