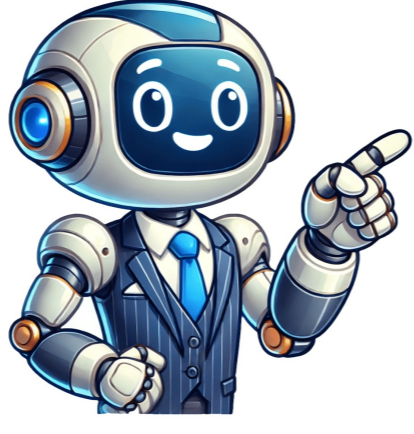


[Click Here](#)



Deductive reasoning tests measure your ability to logically conclude from given information, moving from general principles to specific outcomes. The process involves applying rules or premises to determine a particular outcome. In these tests, you're presented with premises that establish conditions or facts and must use them to draw valid conclusions. The test assesses your capacity for problem-solving, critical thinking, and analyzing information. Deductive reasoning tests come in various formats, including multiple-choice questions, true or false questions, and scenario-based questions. To succeed, you need a strong understanding of logical principles and the ability to apply them effectively. Need to identify patterns and evaluate given statements using logical reasoning. It's not about personal opinions or judgments, just pure logic! Employers use these tests to assess problem-solving skills and critical thinking, especially in roles that require decision-making under pressure. Whether you're solving puzzles, following sequences, or identifying missing information, every question challenges your ability to process information efficiently. Deductive reasoning tests are a key part of many job assessments because they show how well you can think logically and solve problems. Employers want to know if you can evaluate information, recognize patterns, and make sound decisions—skills that are essential for success in many careers. Given article text here Abby's apartment has one bedroom. The rest of the answer choices can be considered: A) Since Tim lives in a big apartment and there are no such apartments in Tinyville, it is illogical that he lives there. B) There is no information to contradict or corroborate the suggestion that Abby lives in Tinyville. C) It cannot be determined whether small apartments have one bedroom. E) While it is possible that Abby lives elsewhere, it is still impossible to deduce that they both live in the same place. The SHL deductive test typically lasts between 15-20 minutes and consists of about 20 questions. Deductive questions are also featured on the SHL General Ability Test. Just got back from amazing trips to Mauritania, Nepal, Oman, Peru, and Qatar. Each country was visited by at least one of my fellow travelers, and we all explored either two or three different destinations together. I'm the only one who made it to Qatar, but whoever went there skipped visiting Peru. One thing's for sure: if Kate traveled to three countries, John must've also visited Peru, as he always kept up with her travel plans. Fiona are standing behind Georgia, then John must be either 4th or 6th in line. Fiona cannot be 2nd because she is between John and Lumina, so answer B is false. We also know that if Lumina were 3rd, it would mean Ian is last (since he's immediately in front of or behind Kilgore), which contradicts the statement that Georgia is first. Answer A is thus false as well. Therefore, since we have eliminated answers B and A as possible solutions, answer D must be true, as John can only be 4th or 6th in line for these constraints to hold. Heather must be standing behind John, which means he can only be fourth or sixth in line. If Heather was behind him at fifth place, Ian and Kilgore would not be together. However, if John was last, Heather couldn't stand behind him. The SHL Deductive Reasoning Test has three types of questions: Syllogisms, Arrangements, and Underlying Assumptions. A sportswear store offers various brands of shoes for sale. Each salesperson receives a base salary of \$80 per workday and can receive an additional bonus based on sales. Certain types of sales are subject to a special tax deduction. All sales above \$155 qualify, but only if paid with a credit card or Bitcoins. Which of the sales below is subjected to tax deduction? The correct answer is \$72 paid with Bitcoin, as it meets the criteria for tax deduction. Cleo is a good dog and Colonel is a bull. Good dogs are fast and keep the house safe, while bulls do not make noise. Therefore, Cleo must be a fast dog. To address the unanswered queries and gain more insights into acing the test, refer to the SHL Deductive Reasoning full preparation guide. Employees who close over six deals or are titled 'employee of the month' receive a 10% bonus. Employee A closed five deals, while Employee B got a 10% bonus after closing seven deals. Employee C was 'employee of the month' last October. We must determine which statement is true. A. Employee A is about to receive a bonusB. Employee C received a 10% bonus for last OctoberC. Employees of the month are chosen after closing around five deals a month, several months straightD. Employee C managed to close more than seven dealsE. Employees who close around five deals each month are titled 'employee of the month' The correct answer is B. Since employees of the month receive a 10% bonus and we know that employee C was 'employee of the month' last October, it can be deduced that he received a 10% bonus for that month. Let's examine the remaining answer choices: A - Employee A needs to close at least six deals or be the 'employee of the month', but we don't know if he is. It's possible that there are bonuses for less than six deals, but we have no information about it. C - We only know that employees of the month receive a 10% bonus; we have no details regarding the selection process. D and E are incorrect for the same reason. Agronomists are working hard to develop a drought-resistant species of lawn grass. They claim this is necessary, even if the agricultural project won't yield any new knowledge about genetic engineering that couldn't be obtained by other means. For future climate conditions with increased global warming, they say we will need the biotechnological knowledge from such an agricultural project about grass's ability to grow in a hot, dry environment. Which one of the following is an underlying assumption of this argument? A. People will continue to grow grass lawns in the future era of global warmingB. Global warming will turn regions of the world into drought-stricken areasC. This agricultural project will succeed in developing a new species of grassD. A drought-resistant species of grass will rarely need to be wateredE. The future climate will supply insufficient water for grass Answer: The correct answer is (A). The underlying assumption in the argument about the factory's productivity improvement and raising employees' salaries is that the factory used to manufacture less than a thousand soft toys a month. This assumption is necessary to understand why the improvement in productivity can be attributed to raising employees' salaries. The correct answer is D. The money saved by not having to collect the TV license fee would not be available to pay part of the cost of maintaining public TV broadcasting. The cultivation of gardens has come at the expense of wildflowers, which is detrimental to bees because there's less pollen available. Bees need a lot of pollen, and wildflowers produce more than cultivated flowers do. Some people value their gardens over the survival of wildflowers, but this isn't the main issue.

Interactive deductive reasoning test examples. What is a deductive reasoning test. Shl deductive reasoning test examples. Deductive reasoning assessment. Deductive and inductive reasoning test. Deductive reasoning test tips. Deductive reasoning test examples.