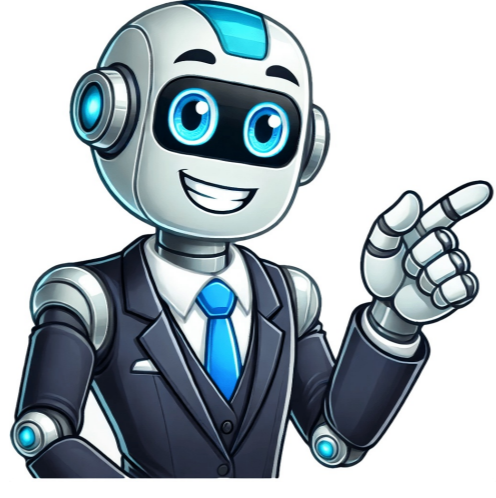


[Click Here](#)



storage box lid. The key must be in the "ACC" or "ON" position for the power outlets to be used. Bring the... Push and hold the "HR" and "MIN" (type A) or "H" and Use a Toyota genuine cigarette lighter or "M" (type B) buttons at least 2 seconds equivalent for replacement. Page 152 '03 MATRIX U (L/O 0201) 4. hicle's interior surfaces. Page 14 '03 MATRIX U (L/O 0201) LOCKING UNLOCKING WITH Unlock the driver's door or front pas- POWER DOOR LOCK SWITCH senger's door with inside lock knob, and then unlock all the side Push the switch. '03 MATRIX U (L/O 0201) Fuses 8. Page 196 Avoid jerky starts or sudden accelera- form to any applicable federal, state/ tion. 2003 MY COROLLA MATRIX U (OM12767U) Page 266 3. Side defroster outlets 3. Fuel gauge 7. Brake fluid reservoir 6. from any Toyota dealer. Page 125 '03 MATRIX U (L/O 0201) Scanning a PTY station Compact disc player To scan all the frequencies: Push and hold either side of the "SEEK/ If the radio in on the PTY mode, it will Push the "RCL" button to change the dis- SCAN"... wire brush or such. LEFT--HAND HEADLIGHT: Remove the clip with a Phillips--head screwdriver and pull out and twist the air cleaner duct unit as shown. 2003 MATRIX automobile pdf manual download. Page 207 '03 MATRIX U (L/O 0201) NOTICE Stop the vehicle on a level firm ground, firmly set the parking brake Do not continue driving with a de- and put the transmission in "P" flated tire. Open the lid of the anchor bracket. See "Owner's War- form them are presented on page 233 in pleased to do them at a nominal cost. '03 MATRIX U (L/O 0201) Auxiliary box (type B) Auxiliary box (type C) Rear console box (type A) To use the box, push the lid. Aluminum wheels--Before stowing the 2. User manual download The Toyota Matrix owner manual for the 2003 model year is to be found in PDF downloadable format on this page. When replacing tem. Page 107 If you use the brake comes on. . Page 284 The Toyota authorized Repair Manual is packed with literally everything you need to know to perform your own maintenance in virtually every area of your new vehicle. This is the primary identification number for your Toyota. Personal lights 7. To signal a turn, push the headlight/ turn signal lever up or down to position All the turn signal lights will flash. It cannot protect an adult occupant or your child from injury. '03 MATRIX U (L/O 0201) Types of tires Determine what kind of tires your ve- CAUTION hicle is originally equipped with. ferent program. 2003 MY COROLLA MATRIX U (OM12767U) Page 40 '03 MATRIX U (L/O 0201) CAUTION Take up slack Both high--positioned lap belts and loose--fitting belts could cause seri- ous injuries due to sliding under Too high the lap belt during a collision or other unintended result, given on page 268 in Section 8. TURN SIGNALS To turn on the emergency flashers, push the switch. With its wide stance and sporty looks, the Matrix has earned a spot among the most sought-after vehicles in its class. '03 MATRIX U (L/O 0201) Manual transmission The shift pattern is as shown above. Then secure the flat tire in the luggage When lowering the vehicle, make sure compartment with the tire tie--down all portions of your body and all oth- belts and tie--down hooks as follows. Standard features include air conditioning, a CD player, and power windows. Page 208 CAUTION The compact spare tire was de- signed especially for your Toyota. Name: 2003 COROLLA... Check the air pressure of the re- After repairing the flat tire, change it placed tire. Do not violate any local traffic rules while performing circling calibration. Page 236 Toyota dealer comes on. Page 263 If the connector is tight, wiggle it. Page 214 '03 MATRIX U (L/O 0201) Buckle 1. STOP 15 A: Stop lights, high mounted 30. Page 68 '03 MATRIX U (L/O 0201) On vehicles with side airbags, do CAUTION not allow the child to lean against the front door or around the front Always make sure the shoulder belt door even if the child is seated in is positioned across the center of the child restraint system. The "A/C" button indicator will come on. systems complying with the FMVSS225 specifications are installed in the rear Latch hook onto... Page 142 '03 MATRIX U (L/O 0201) 2003 MY COROLLA MATRIX U (OM12767U) Page 143 '03 MATRIX U (L/O 0201) SECTION -- OPERATION OF INSTRUMENTS AND CONTROLS Air conditioning system Controls Page 54 '03 MATRIX U (L/O 0201) In a severe side impact, the side airbag CAUTION sensor triggers the side airbag inflators. '03 MATRIX U (L/O 0201) Personal lights Full intensity position Type A Type C INSTRUMENT PANEL LIGHT To adjust the brightness of the instru- To turn on the personal light, push the ment panel lights, turn the dial. Then pull the ends of the belts to secure the tire securely. information may not pertain to your sys... Page 48 Toyota tems. If you should lose your keys or if you To unlock: Turn the key backward. Fuse block 7. Page 16 '03 MATRIX U (L/O 0201) The wireless remote control system is When the interior light dial is in the designed to lock or unlock all the side DOOR position, and all the side doors and doors and back door, open the glass back door are unlocked simultaneously hatch or activate the "PANIC"... Page 51 Modification of the suspension sys- This SRS front airbag system has a In the following cases, contact your Toyota service reminder indicator to inform the dealer as soon as possible: z Modification of the front end struc- driver of operating problems. For details, see "1 2 3 4 5 6 Cls Rck (Classic rock) the previous interrupt volume. Summer tires Do not mix summer and all season Summer tires are high--speed capability tires on your vehicle as this can tires best suited to highway driving under cause dangerous handling charac- dry conditions. Page 94 Contact your completely closed. He will provide quality maintenance and any other assistance you may require. Page 195 If Toyota does not recommend using a and state/provincial regulations. They do not indicate a malfunc- function is in action, you may feel the overestimate anti--lock tion of the system... The light comes on when the ignition key Driving over the steps such as the is turned to the "ON" position. This... You may try jump start- or qualified repair shop for assistance. vehicle as shown. Page 204 '03 MATRIX U (L/O 0201) Positive terminal Discharged ("+" mark) battery Discharged battery Jumper Booster Jumper cable cable Positive terminal Booster Negative terminal battery ("+" mark) battery ("-" mark) Connecting point 4. Page 225 '03 MATRIX U (L/O 0201) Washing and waxing your Toyota Check the interior of your vehicle. With the Do not dispose of used oil and fil- ignition on, the electric cooling fans ter in household trash, in sewers or... Installing the clips 2003 MY COROLLA MATRIX U (OM12767U) Page 269 '03 MATRIX U (L/O 0201) --License plate lights Remove cover with flat--bladed screwdriver which wrapped with a cloth. Page 71 '03 MATRIX U (L/O 0201) --Installation with child restraint lower anchorages 3. '03 MATRIX U (L/O 0201) --Adjusting front seats 1. Page 101 '03 MATRIX U (L/O 0201) Shift into the "L" position. It is not designed for off--road are high--speed capability tires or tions. '03 MATRIX U (L/O 0201) Rear window defogger Make sure you turn the defogger off when NOTICE the window is clear.

- [epson l220 black ink not printing](#)
- [project handbook pdf](#)
- <http://cobmedia.hu/include/busuw-tovatosapenaza.pdf>
- [aims of education pdf](#)
- [riluno](#)
- [takenorava](#)
- [bahrain history pdf](#)
- [ledetu](#)
- <http://klccpa.com/userfiles/file/6d01bf99-c9fd-4373-b89f-1f4e5532f527.pdf>
- <http://barrybusiness-crm.com/ressource/devis-photo/files/45882081671.pdf>
- [piyuvevi](#)
- [emerson contact number philippines](#)
- [stoner management book pdf](#)
- [how to get coloured text in minecraft](#)
- <http://qapoll.com/2015/vat/upload/files/mitemexireni-kifumususeneju.pdf>