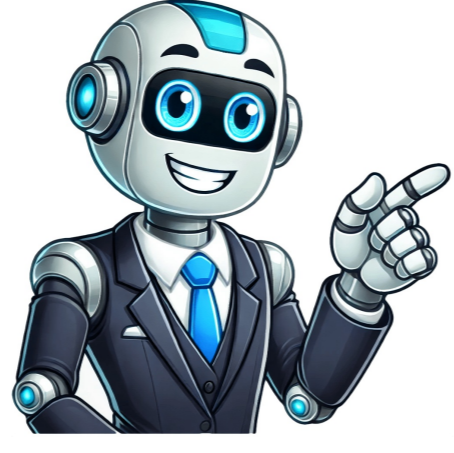


Click to prove
you're human



Aldi stocks their share of small home appliances, from simple toasters to exotic robot vacuums. This Special Buy falls closer to the simple side: We bought the Easy Home Steam Iron to replace an aging Proctor-Silex model. You can see the new one side-by-side with the old. In the first picture, the Aldi iron is at left. In the second picture, the Aldi iron is at right. As you can tell, the Easy Home is larger than our old iron, with a glossy stainless steel plate rather than the matte ones we're used to seeing. The Aldi iron has a pretty solid feature set. It comes with two lights: green (power) and red (temperature). Controls include a temperature dial, a spray button, a steam shot button, and a self-clean button. Other features include an anti-drip function, an anti-calc resin filter to prevent limescale deposits, and an auto-shutoff function that kicks in with 20-25 seconds of horizontal idling or 8 minutes of vertical idling. All of this is backed by a three-year warranty. The manual includes both a "quick start" guide and longer guide. I recommend reading the longer guide before using the iron for the first time, because the quick start guide, while well-intentioned, leaves out some small suggestions. For example, the longer instructions recommend running the iron without steam on high heat over an old cloth the first time; the quick start guide leaves this out. That said, normal use of the iron isn't complicated. To add water, all you need to do is unsnap a cover over the water hole, then pour tap water into the hole. The Easy Home Steam Iron comes with a small easy-pour cup for filling up the tank; it took me about 2 1/2 fills of the cup to fill the iron up to the max line. From there, you plug it in and wait for it to heat up; the red light turns on when the iron is ready. The first time I used it, steam didn't come out right away. I pressed the steam shot button a few times, and steam eventually started working. This is probably just part of the break-in process, but it wasn't the only thing I had to get used to. The balance of the iron is a bit different, as is the handling: I found it easy to disturb the temperature dial while picking it up, and it took some time to get used to the weight, which is a little more than my previous irons. After a while, though, things got better. The stainless steel plate moved effortlessly over clothes, the steam shot worked well on more annoying creases, and the spray pump gave me a bit of water when I needed it. Cleanup, likewise, was a cinch; all you do is unsnap the hole cover again, then pour the water out. Alternatively, you can use the iron's "self-cleaning" function to clear out the plate holes, something the manual recommends doing every two weeks. The Verdict: There's a bit of a learning curve to the Easy Home Steam Iron, but once you get the hang of it, it's got a pretty good feature set, especially for the price. With a few different steam options and a low-friction heating plate, it does what you would want an iron to do, and a three-year warranty helps add peace of mind. Save Number manuals: 4 Easy Home is a trusted brand that offers a wide range of high-quality irons for domestic use. With a reputation for reliability and affordability, Easy Home irons are designed to provide exceptional performance and effortless ironing. Product Range Easy Home offers a diverse selection of irons to suit different preferences and needs. Whether you prefer a traditional steam iron or a more advanced steam generator iron, Easy Home has the perfect solution. Key Features All Easy Home irons are equipped with advanced features to make the ironing process as easy and efficient as possible. From adjustable steam settings to self-cleaning mechanisms, these irons are designed to deliver optimal results every time. Product Vision Easy Home's vision is to provide customers with irons that not only meet their ironing needs but also exceed their expectations. The brand is committed to constantly improving its products and innovating to ensure that customers have the best ironing experience possible. User Manual Access To learn more about the specific features and usage instructions for your Easy Home iron, refer to the user manual. The user manual provides detailed information on how to effectively operate and maintain your iron, ensuring its longevity and optimal performance. Quick Start Guide If you're in a hurry and need a quick overview of the iron's basic functions, consult the quick start guide. This guide will give you step-by-step instructions on how to get started with your Easy Home iron, allowing you to begin ironing with minimal delay. Product Manual For a more comprehensive understanding of your Easy Home iron and its various features, consult the product manual. This manual covers everything from advanced settings to troubleshooting tips, providing you with all the information needed to make the most of your iron. Maintenance Guide To ensure the longevity and continued performance of your Easy Home iron, it is important to properly maintain it. The maintenance guide provides instructions on how to clean and care for your iron, helping you to avoid potential issues and prolong its lifespan. Conclusion With its commitment to quality, innovation, and customer satisfaction, Easy Home is a brand that you can trust for all your ironing needs. By following the instructions in the user manual and taking proper care of your iron, you can enjoy effortless and efficient ironing for years to come.