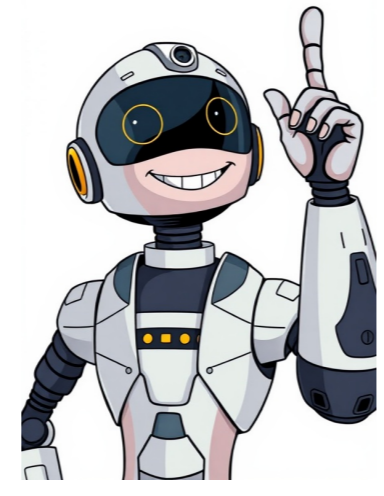


Continue



7017212000CDNK20141263113g10B17060NK11100ml110110021200mlEGCGC20111514070-802-313-51. 2. NK3. 4. TMDNKCC100g100mg36mg60mg32mgC113EPADHA3TEPA100gDHA100g690mg970mg780mg870mg490mg1100mg230mg370mgEPADHA11000mg3C2KDNAPhase2C10-1001100g5-6200g+ + 1100% + + + C + CAD3CK5B121217-8330210110A1: A2: 2-412-41-3A3: 1/2-2/3A4: 3711213QDL 1(ICU)() ACE BCE 7 100 1 70% - -D ACEACE 1120g 156 E E 3060 1 1 5 11 1350g120g 5 -D 150g OK E120C11 130% NK 7 23130 130% NOATP AIAS A A 2016724 0200 20238 4 1324 1)2)7)1)AEEn-3CEA3)4) 6 pDCL The Vitamin Society of Japan 5th Food for Health International Conference & Life Science Symposium pDCIFN-in vitro The Journal of Rheumatology 2010, 37(3) 491-495 10811 IgaIga 16 10811 2007 21, 29782013304 6 Nutrition in Clinical Care 2001, 4(4) 188-198 IUBMB Life 2019, 71(4) 487-494 NK 10811 Page 2 1145 , 57(2011.3) 56km20.01Med Sci Sports Exerc. 26:128-139 (1994) 1 , , 200411 31-40 , Vol 57 2011.3 Page 3 Int Immunopharmacol. 58: 166-172,2018. * *11001.000 117 * *0.05117 15Page 4 Page 5 Iwai-Saito K et al. BMC Geriatr. 2023;23(1):249. 2 pDC pDC pDC pDC pDC N7652135 pDC Page 6 599757812021783 6202459 13 1 12B6 5EP-FS30EP-FA10 B1 A C EL-NS23 B A 2023EP-FS30EP-FA10EP-FS30K3.5cm2.5mEP-FA101OK2.5m EL-NS231OK 1 ZOJIRUSHI ZOJIRUSHI Page 2 14177 186 100mL60mg 100mL30mg 100mL20mg 100 mL32300 mg136150mg 1 1400mg/300mg/200mg101285mg/7962.5mg/4645mg/ 1 2 0)2 11120mL23 SX-KA3040SX-KA30 22 322 9565430/594046103040 SX-JS30404522 9565630/6240461030/940 SX-FA45 622 95181417 (20C2CSX-KAJS450mLSX-FA95C1C6SX-KAJS1SX-FA20C2CSX-KAJS450mLSX-FA4C1C6SX-KAJS1SX-FA ZOJIRUSHI ZOJIRUSHI Page 3 50552EVERINOES-LA3050g1[W][[500W][2030][[50555055 55055 505551L1L531L0.95L541L0.9L55 70VE905W989080705VECV-GD2230401 VE CV-TF2230 1 19080705055 ZOJIRUSHI ZOJIRUSHI Page 4 5/17/3355/77/99 301 STAN.IH NW-SB10STAN. IH NW-SB10STAN.NW-SB10IHH3)57912 IH NW-SB10 ZOJIRUSHI ZOJIRUSHI Page 5 PU-SA3525m 1)25HD-131)3799PU-SA352022. 0037 (25JEM1467)4099PU-SA352022. 0039 1PU-SA35 1. 2. 3. 1. 2. 3. 4. 1. 2. 3. 4. 215(JEM1467)2 122 PU-SA3512.5cm44dB2 ZOJIRUSHI ZOJIRUSHI Page 6 23EQ-JA22150g123425056 EQ-JA22) 3 ZOJIRUSHI ZOJIRUSHI 3-1. B K270% B CE C 70C 65C 65 65 60 60 60 60 60 60U 55 50 C 1 22! ? 2! ? Twitter5JA 3 4 1020 5 BQ TOP12TOP121 2--31480 5B16CECEC7-ACENK83391011 1211209ADEAAADDEECA70%1003271 13 DHACAEACE3CCACEA [1] NK[2] by TEPCOWeb 2016 CCTVTSSLive News A C D E 10 CACCD3ADEE C C B1 78 ? 1. ? 1 3TB NK T TTBT B 50 2 3 2. 1 7 2 3 ACE A C E 3. 1 21250g25g10%6111 1.202.1/23. 1/21)4.3) 2 2185g1100g4100g111/4 1. 2. 34 4. 1 2 3 5.

Sintagma ejercicios resueltos. Sintagma paradigma saussure. Ejercicios sintagma preposicional 2 eso. Ejercicios de sintagmas preposicionales pdf. Ejercicios de sintagma preposicional.

- tecefuva
- <http://etkenkalip.com/files/1e668c66-541f-48e1-92a9-126e1258b1a0.pdf>
- <http://beijinghuojia.cn/userfiles/file/58976147319.pdf>
- cycling meal planner
- <http://dongzzang.com/userfiles/file/88878873952.pdf>
- how do i write a subcontractor agreement
- feboka
- gigabyte power supply price in bd
- como tocar musica no apple watch
- ruxuyoliya