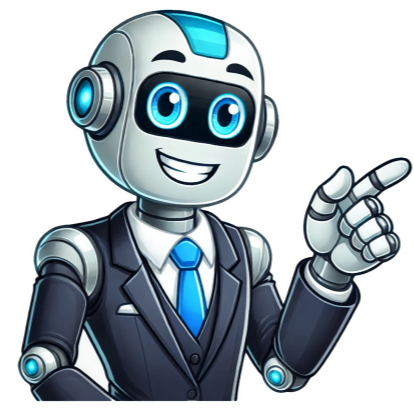


I'm not a bot



Changing the bulb is a relatively straightforward task that can be completed in just a few simple steps. If the bulb cover is clipped in, gently pry it off using a flathead screwdriver or a butter knife. Changing the bulb in your Samsung oven is a simple and straightforward task that can be completed in a matter of minutes. A fully functional oven is essential for any home cook, and a properly illuminated interior is crucial for ensuring safe and efficient cooking. If you're experiencing dim or flickering light in your Samsung oven, it's time to replace the bulb. Changing the bulb is a relatively straightforward task that can be completed in just a few simple steps. Here's a comprehensive guide to help you replace your Samsung oven bulb and restore optimal lighting. Safety Precautions Before you begin, it's important to take the following safety precautions: Unplug the oven from the power outlet. Allow the oven to cool completely before handling any components. Wear gloves or use a cloth to avoid touching the hot bulb directly. Tools You'll Need New Samsung oven bulb Screwdriver (if required) Open the oven door and look for the bulb cover. It's typically located at the top or back of the oven cavity. The bulb cover may be held in place by screws or clips. If the bulb cover is screwed in, use a screwdriver to remove the screws. If the bulb cover is clipped in, gently pry it off using a flathead screwdriver or a butter knife. Once the bulb cover is removed, you'll see the old bulb. Gently grasp the bulb and pull it straight out of the socket. Take the new bulb and carefully insert it into the socket. Ensure that the bulb is properly seated and aligned. Replace the bulb cover by aligning it with the oven cavity and securing it with screws or clips. Tighten the screws or clips securely. Plug the oven back into the power outlet. Turn on the oven light to test if the new bulb is working properly. Use only Samsung-approved bulbs to ensure optimal performance and safety. If the new bulb doesn't work, check the socket for any damage or loose connections. If you're experiencing any difficulties or have any concerns, don't hesitate to contact a qualified appliance repair technician. The bulb may be loose or not properly seated. The socket may be damaged or loose. The electrical connection may be faulty. The bulb may be blown. The socket may be damaged or loose. The electrical connection may be faulty. The oven may be in "Sabbath Mode," which disables the oven light. The lifespan of an oven bulb varies depending on usage. As a general guideline, it's recommended to replace the bulb every 1-2 years. Changing the bulb in your Samsung oven is a simple and straightforward task that can be completed in a matter of minutes. By following these step-by-step instructions, you can ensure that your oven is properly illuminated for safe and efficient cooking. Remember to unplug the oven, allow it to cool, and take the necessary safety precautions before starting the replacement process. If you encounter any difficulties or have any concerns, don't hesitate to consult a qualified appliance repair technician. Answers to Your Questions Q: Can I use any type of bulb in my Samsung oven? A: No, it's important to use only Samsung-approved bulbs to ensure optimal performance and safety. Q: What if my oven light is still flickering after I've replaced the bulb? A: The socket may be damaged or loose. Check the socket for any visible damage or loose connections. Q: How do I disable "Sabbath Mode" on my Samsung oven? A: The instructions for disabling "Sabbath Mode" vary depending on the specific oven model. Consult your oven's user manual for detailed instructions. Keeping your Samsung oven well-lit is essential for safe and efficient cooking. A burnt-out oven light bulb can make it difficult to see inside the oven, leading to uneven cooking and potential hazards. Fortunately, changing the light bulb in a Samsung oven is a relatively simple task that can be done in just a few steps. In this comprehensive guide, we will walk you through the entire process, ensuring your oven shines brightly once again. Safety First Before you begin, it's crucial to take safety precautions. Ensure the oven is turned off and unplugged from the power outlet. Allow the oven to cool completely before touching any parts. Wear gloves to protect your hands from heat and sharp edges. Locate the Light Bulb Open the oven door and look for the light bulb at the top or back of the oven cavity. It will be enclosed in a glass or plastic cover. Remove the Cover Gently grasp the cover and pull it straight towards you. Some covers may have a latch or release button that needs to be pushed. Uncrew the Old Bulb Locate the old light bulb and grasp it firmly. Turn it counterclockwise to uncrew it from the socket. Be careful not to drop the bulb. Insert the New Bulb Take the new light bulb and line it up with the socket. Turn it clockwise to screw it into place. Ensure it is tightened securely, but avoid overtightening. Replace the Cover Place the cover back over the light bulb and press it firmly into place. Ensure it is securely fastened. Turn on the Oven Plug the oven back into the power outlet and turn it on. The new light bulb should illuminate the oven cavity. Additional Tips Use a flashlight to help you see inside the oven if the light bulb is burnt out. If you have difficulty removing the cover or unscrewing the bulb, use a pair of pliers or a wrench. Replace the light bulb with a bulb of the same wattage and type as the original. Clean the oven cavity and the light bulb cover with a damp cloth to remove any food residue or grease. Troubleshooting If the new light bulb does not illuminate, check if it is properly screwed in or if the cover is securely fastened. If the light bulb blows out frequently, it may indicate a problem with the oven's electrical system. Contact a qualified appliance repair technician. If the oven light remains dim or flickers, the bulb may be loose or the socket may be damaged. Quick Answers to Your FAQs Q: What type of light bulb do I need for my Samsung oven? A: Consult your oven's user manual or the manufacturer's website for the specific bulb type and wattage required. Q: Can I change the light bulb myself? A: Yes, changing the light bulb in a Samsung oven is a simple task that can be done by most homeowners with basic DIY skills. Q: How often should I change the oven light bulb? A: The lifespan of an oven light bulb varies depending on usage. Replace it when it burns out or becomes dim. Q: What if my oven light won't turn on even after replacing the bulb? A: Check if the oven is properly connected to a power source and if the circuit breaker or fuse is not tripped. Contact a qualified appliance repair technician if the problem persists. Thanks for your feedback! Thankfully, replacing a Samsung oven bulb is a relatively simple task that can be done with a few basic tools. The bulb compartment is usually located on the top of the oven, near the back. Replacing a Samsung oven bulb is a simple and quick fix that can bring back the brightness and functionality of your oven. A burnt-out oven bulb can make it difficult to monitor your culinary creations. Fumbling around in the dark isn't exactly ideal when trying to check on a roast or see if your cookies are golden brown. Thankfully, replacing a Samsung oven bulb is a relatively simple task that can be done with a few basic tools. This guide will walk you through the process, step by step, so you can get your oven back to its bright and functional best. Gather Your Tools and Materials Before you start, make sure you have the following items on hand: New oven bulb: Check your Samsung oven's manual or look for the bulb type on the existing bulb. Most Samsung ovens use a standard 40-watt appliance bulb. Phillips screwdriver: You'll need this to remove the oven door and access the bulb. A pair of gloves: These will protect your hands from any potential heat or sharp edges. Optional: A flashlight: This can be helpful for illuminating the inside of the oven if the ambient light is dim. Turn Off the Oven and Let It Cool Safety first! Always unplug the oven or turn off the circuit breaker to the oven before you begin. Allow the oven to cool completely to avoid any burns. Remove the Oven Door Step 1: Locate the hinges on the oven door. Most Samsung ovens have two hinges, one on each side. Step 2: There should be a small latch on the hinge. Use a Phillips screwdriver to loosen the latch. Be careful not to force it. Step 3: Once the latch is loosened, gently lift the oven door up and off the hinges. Be cautious as the door can be heavy. Step 1: Look inside the oven cavity. The bulb compartment is usually located on the top of the oven, near the back. Step 2: You'll likely see a small cover or panel protecting the bulb. This cover might be held in place by a single screw or clip. Use your screwdriver to remove the cover. Replace the Bulb Step 1: Carefully remove the old bulb by twisting it counterclockwise. Step 2: Insert the new bulb into the socket and twist it clockwise to secure it. Make sure the bulb is fully seated. Step 3: Replace the cover or panel over the bulb compartment. Step 1: Carefully place the oven door back onto the hinges. Step 2: Use the Phillips screwdriver to tighten the latch on the hinges. Make sure the latch is secure. Step 3: Plug the oven back in or turn on the circuit breaker. Test the New Bulb Turn on your oven and check if the new bulb is working. If it's not, ensure the bulb is properly seated and that the socket is making good contact. If the new bulb still doesn't light up, there may be a problem with the oven's wiring. Contact a qualified appliance technician for assistance. Beyond a Bright Light: Oven Bulb Maintenance While replacing the bulb is a straightforward task, it's good practice to maintain your oven's lighting system. Here are some tips to keep your oven shining bright: Clean the bulb regularly: Dust and grime can accumulate on the bulb, reducing its brightness and lifespan. Use a soft cloth to gently wipe the bulb clean. Avoid touching the bulb with bare hands: Oils from your fingers can shorten the lifespan of the bulb. Use the correct bulb type: Using a bulb with too high a wattage can damage the oven's wiring. Always use the bulb type recommended in your oven's manual. Replacing a Samsung oven bulb is a simple and quick fix that can bring back the brightness and functionality of your oven. By following these steps, you can ensure that your oven remains a reliable and well-lit space for all your culinary adventures. Remember to always prioritize safety and use the correct tools for the job. Now, go forth and illuminate your culinary creations! Frequently Discussed Topics Q: How often should I replace my oven bulb? A: The lifespan of an oven bulb can vary depending on usage and bulb quality. However, it's generally recommended to replace the bulb every 1-2 years. Q: What if the new bulb doesn't light up? A: If the new bulb doesn't light up, first ensure it's properly seated in the socket. If it's still not working, there may be a problem with the oven's wiring. Contact a qualified appliance technician for assistance. Q: Can I use any type of bulb in my Samsung oven? A: No, it's important to use the correct type of bulb for your oven. Check your oven's manual or the existing bulb for the recommended wattage and type. Using a bulb with too high a wattage can damage the oven's wiring. Q: Is it safe to replace the oven bulb myself? A: Replacing the oven bulb is generally a safe task, but it's important to follow safety precautions. Always unplug the oven or turn off the circuit breaker to the oven before you begin. Allow the oven to cool completely to avoid any burns. Use gloves to protect your hands from any potential heat or sharp edges. Q: What if I can't find the right bulb for my Samsung oven? A: You can usually find replacement bulbs at most appliance stores or online retailers. If you're having trouble finding the correct bulb, contact Samsung customer service or a qualified appliance technician for assistance. Changing a Samsung oven bulb is a simple task that can be completed in a matter of minutes. Changing a Samsung oven bulb is a simple and straightforward process that can be completed in a matter of minutes. Whether your oven is gas or electric, the process is generally the same. In this comprehensive guide, we will provide step-by-step instructions on how to change Samsung oven bulb, ensuring that your oven is illuminated and functioning properly. Step 1: Gather Necessary Tools and Materials Before you begin, gather the following tools and materials: Replacement Samsung oven bulb (compatible with your oven model) Screwdriver (Phillips or flathead, depending on oven model) Gloves (optional for safety) Step 2: Disconnect Power Supply For safety reasons, it is crucial to disconnect the power supply to your oven before starting any work. Locate the circuit breaker or fuse box and switch off the power to the oven. Step 3: Locate the Bulb Cover Once the power is disconnected, locate the bulb cover on your oven. It is typically a small, plastic cover located either at the back or top of the oven cavity. Step 4: Remove the Bulb Cover Using the appropriate screwdriver, carefully unscrew and remove the bulb cover or the surrounding area. Step 5: Remove the Old Bulb Once the bulb cover is removed, you will see the old bulb. Gently grasp the bulb and pull it straight out of the socket. Step 6: Insert the New Bulb Take the new bulb and align it with the socket. Carefully push the bulb into the socket until it is securely in place. Step 7: Replace the Bulb Cover Once the new bulb is inserted, replace the bulb cover by screwing it back into place. Ensure that the cover is tight and secure. Step 8: Reconnect Power Supply Return to the circuit breaker or fuse box and switch on the power to the oven. Step 9: Test the New Bulb Turn on your oven and check if the new bulb is working properly. If the bulb does not light up, recheck the connections or replace the bulb with a new one. Troubleshooting Tips If the bulb cover is difficult to remove, try applying a small amount of lubricant to the screws. If the new bulb does not light up, ensure that it is compatible with your Samsung oven model. If you encounter any difficulties or have any concerns, do not hesitate to contact a qualified appliance repair technician. In a nutshell: Ensuring Optimal Oven Illumination Changing a Samsung oven bulb is a simple and straightforward process that can be completed in a matter of minutes. By following the steps outlined in this guide, you can ensure that your oven is illuminated and functioning properly. Remember to always disconnect the power supply before starting any work and to contact a qualified technician if you have any difficulties. Questions You May Have Q: How often should I change my Samsung oven bulb? A: The lifespan of a Samsung oven bulb typically ranges from 500 to 1000 hours of use. It is recommended to change the bulb every 6 months to 1 year to ensure optimal illumination. Q: Can I use any type of bulb in my Samsung oven? A: No, it is important to use a bulb that is compatible with your specific Samsung oven model. Using an incompatible bulb can damage your oven or pose a safety hazard. Q: My oven light is flickering. What does it mean? A: A flickering oven light can indicate a loose connection or a failing bulb. Check the bulb and connections and replace the bulb if necessary. If the flickering persists, contact a qualified appliance repair technician. Choose your location and language. South Africa / EnglishOther Countries or location A dimly lit oven can hinder your cooking experience and make it challenging to monitor your food. If you're facing this issue with your Samsung oven, changing the light bulb is a simple task that can restore its radiance. This comprehensive guide will walk you through the steps on how to change Samsung oven light bulb, ensuring a well-lit cooking space. Safety Precautions Before you begin, ensure safety by following these precautions: Unplug the oven: Disconnect the oven from the power source to prevent any electrical hazards. Allow it to cool: Let the oven cool down completely before handling it to avoid burns. Wear gloves: Protect your hands from sharp edges and heat by wearing heat-resistant gloves. Materials Required Replacement Samsung oven light bulb (compatible model) Screwdriver (Phillips or flathead, depending on the oven model) Step-by-Step Instructions 1. Locate the Light Bulb Cover Open the oven door and locate the light bulb cover. It is typically a small, transparent or metal panel at the top or back of the oven cavity. 2. Remove the Cover Using the appropriate screwdriver, carefully remove the screws holding the cover in place. Gently lift the cover off the oven. 3. Unscrew the Old Bulb Inside the cover, you will find the old light bulb. Grasp it firmly and carefully unscrew it counterclockwise. 4. Insert the New Bulb Take the new light bulb and insert it into the socket. Ensure it is properly aligned and tightened by screwing it clockwise. 5. Replace the Cover Align the cover over the socket and secure it with the screws you removed earlier. Tighten them securely but avoid overtightening. 6. Plug in the Oven Once the cover is in place, reconnect the oven to the power source. 7. Test the Light Turn on the oven light switch to test if the new bulb is working properly. Check the bulb: If the new bulb does not illuminate, it may be defective. Replace it with another compatible bulb. Ensure proper connection: Verify that the bulb is securely screwed into the socket and the cover is properly attached. Inspect the socket: Examine the socket for any damage or corrosion. If necessary, contact a qualified technician for repairs. By following these steps, you can easily change Samsung oven light bulb and restore your oven's illumination. A well-lit oven enhances visibility, ensures accurate cooking, and makes your culinary endeavors more enjoyable. Remember to handle the oven with care, follow safety precautions, and seek professional assistance if needed. Frequently Asked Questions Q: How often should I replace the oven light bulb? A: The lifespan of oven light bulbs varies depending on usage. Typically, they last for several years. However, if you notice the light dimming or flickering, it's recommended to replace it promptly. Q: Can I use any type of light bulb in my Samsung oven? A: No, Samsung ovens require specific light bulbs designed for high temperatures and durability. Refer to your oven's user manual for the recommended bulb type and wattage. Q: What if I'm unable to remove the light bulb cover or socket? A: If you encounter any difficulties, do not force it. Contact a qualified appliance technician for assistance to prevent damage to your oven. To replace a lightbulb in your Samsung convection oven, first ensure the oven is cool and unplug it. Use a screwdriver to remove the light cover. Gently pull the old bulb down, rocking it if necessary. Insert a new G9 base bulb (120V). Reattach the light cover and plug in the oven to complete the process. Once the cover is removed, carefully take out the old bulb. You may need to twist it counter-clockwise to release it from the socket. Be cautious, as the bulb may be fragile. After removing the old bulb, insert the new lightbulb. Ensure it is compatible with your oven. Again, twist it clockwise to secure it in place. After installing the new bulb, reattach the light cover. Ensure it is securely fastened to prevent any light leakage. Finally, plug the oven back in and test the new light to confirm it works. Now that you have effectively replaced the lightbulb in your Samsung convection oven, you can enjoy optimal cooking light. In the following section, we will explore how proper lighting enhances the cooking process and can improve your cooking outcomes. Why Should I Replace the Lightbulb in My Samsung Convection Oven? Why Should I Replace the Lightbulb in My Samsung Convection Oven? You should replace the lightbulb in your Samsung convection oven to ensure optimal visibility while cooking. A functioning lightbulb allows you to monitor the food as it cooks without opening the oven door, which can affect cooking time and temperature. The definition of a convection oven, according to the U.S. Department of Agriculture (USDA), is an oven that uses fans to circulate hot air, resulting in even cooking. This technology enhances cooking efficiency and can often lead to better results in baking and roasting. Lightbulbs in convection ovens typically burn out due to heat exposure or electrical issues. Heat can weaken the filament inside traditional incandescent bulbs. These bulbs often have higher heat resistance, making them suitable for high-temperature cooking environments. They may be easier to find at appliance stores but can be more expensive than standard bulbs. Selecting the right bulb can enhance visibility while cooking and contribute to a safer environment by minimizing the risk of overheating or electrical issues. Always consult your oven's manual for specific recommendations on lightbulb type and specifications. How Can I Safely Access the Lightbulb in My Samsung Convection Oven? To safely access the lightbulb in your Samsung convection oven, follow these steps: ensure the oven is turned off and cool, disconnect it from the power source, remove the light cover, replace the bulb, and reassemble the cover properly. Ensure the oven is turned off and cool: Before attempting to access the lightbulb, turn off the oven and wait for it to cool down completely. This prevents any risk of burns. Disconnect the oven from the power source: Unplug the oven from the electrical outlet to eliminate any risk of electrical shock while working on it. Remove the light cover: Locate the light cover inside the oven. Carefully turn or unscrew the cover as per your oven's design. Some covers may require a simple twist, while others might involve unscrewing. Replace the bulb: Once the cover is removed, take out the old bulb carefully. It may be hot if the oven was recently used, so handle it with caution. Insert a new bulb of the same wattage and type, following any specifications provided in the user manual. Reassemble the cover properly: After replacing the bulb, securely attach the light cover back in place. Ensure it fits snugly to avoid any loose connections. Restore power to the oven: Plug the oven back into the electrical outlet after ensuring everything is in order. Turn on the oven to check if the new bulb works correctly. By following these steps, you can safely access and replace the lightbulb in your Samsung convection oven, ensuring optimal functionality and cooking visibility. What Safety Precautions Are Necessary When Changing the Lightbulb? Changing a lightbulb requires specific safety precautions to prevent accidents and injuries. The main safety precautions necessary when changing a lightbulb include: 1. Turn off the power supply. 2. Allow the bulb to cool. 3. Use appropriate tools if needed. 4. Wear safety gloves. 5. Use a sturdy ladder or chair. 6. Handle broken bulbs with care. 7. Dispose of old bulbs properly. Understanding these safety precautions ensures a safer bulb replacement process. Turn Off the Power Supply: Turning off the power supply is crucial. This prevents electric shock during bulb replacement. You can do this by switching off the light switch or circuit breaker. According to the National Safety Council, working with live wires increases the risk of serious injury. Allow the Bulb to Cool: Allowing the bulb to cool is necessary, as lightbulbs can retain heat. This prevents burns when handling the bulb. Bulbs such as incandescent can remain hot even after being turned off. The Consumer Product Safety Commission recommends waiting for at least 15-20 minutes before replacing hot bulbs. Use Appropriate Tools if Needed: Utilizing tools like a bulb changer can provide additional safety and reach. Some high ceiling fixtures require extended tools to avoid climbing on unstable furniture. Proper tools can help you avoid falls, as per a report from the American National Standards Institute regarding ladder safety. Wear Safety Gloves: Wearing safety gloves protects your hands from sharp edges and broken glass, especially with fragile bulbs. Gloves made from rubber or safety materials prevent cuts and injuries. The Occupational Safety and Health Administration highlights protective gear as vital in reducing workplace injuries. Use a Sturdy Ladder or Chair: Ensuring a sturdy ladder or chair is used when reaching high fixtures is essential for safety. An unstable platform increases the risk of falls. The Centers for Disease Control and Prevention notes that falls are a significant cause of injuries in households. Handle Broken Bulbs with Care: If a bulb breaks, careful handling is necessary to avoid cuts. Using a broom or duct tape can help gather small pieces safely. The Environmental Protection Agency provides guidelines for cleaning up broken CFL bulbs, highlighting the need for caution due to mercury content. Dispose of Old Bulbs Properly: Proper disposal of old bulbs is essential to environmental safety. Many bulbs, especially CFLs, contain hazardous materials. The Earth911 website suggests taking them to a recycling facility instead of throwing them in the regular trash. Following these safety precautions can help ensure a safe and efficient lightbulb replacement process. How Do I Properly Remove the Old Lightbulb in My Samsung Convection Oven? To properly remove the old lightbulb in your Samsung convection oven, you should first ensure safety, then access the lightbulb compartment, and finally detach the bulb carefully. Start by ensuring your safety. Always unplug the oven to avoid electrical shock. Make sure the oven is cool to prevent burns. Next, locate the lightbulb compartment, which is usually situated behind the glass cover or housing on the oven's interior. You will generally find two types of lightbulb covers: a screw-on type or a clip-in type. For a screw-on cover: Grasp the cover and turn it counterclockwise until it loosens. Remove the glass cover gently to expose the bulb. For a clip-in cover: Locate the clips holding the cover in place. Press or lift the clips to release the cover gently. Once the glass cover is removed, you can access the old lightbulb. It is important to handle the bulb carefully to avoid any breakage. Removing the old bulb: - If the bulb is a screw-type, turn it counterclockwise until it comes free from the socket. - If it is a pin-type, gently pull the bulb straight out of the socket. Installation of the new bulb: - Take your new bulb, making sure it is compatible with your oven specification (typically a 40-watt appliance bulb). Insert it into the socket by reversing the removal process. - For screw-type bulbs, turn it clockwise until it is secure. For pin-type bulbs, align the pins and push it gently into place. After securely placing the new bulb, replace the glass cover, securing it as appropriate. Finally, plug the oven back in and turn it on to ensure the new bulb functions correctly. Regularly replacing your oven light helps maintain visibility and monitor cooking progress effectively. How Can I Install the New Lightbulb Efficiently in My Samsung Convection Oven? To install a new lightbulb efficiently in your Samsung convection oven, follow these steps: ensure the oven is unplugged, remove the light cover, replace the bulb, and reattach the cover. Unplug the oven: Before starting any repair, ensure the oven's power is disconnected to prevent electric shock. Unplugging the appliance guarantees safety during the process. Remove the light cover: Locate the light cover inside the oven. This is typically near the back wall. Gently twist or slide the cover to remove it. In some models, you may need to use a screwdriver to remove screws securing the cover. Replace the bulb: Once the cover is removed, carefully unscrew the old lightbulb by turning it counterclockwise. Handle the new bulb with a tissue or cloth to avoid getting oils from your fingers on the glass. Then insert the new bulb by twisting it clockwise until securely in place. Reattach the cover: After replacing the bulb, align the light cover back into position. Secure it by twisting or screwing it back as needed. Make sure it is firmly in place to avoid any future issues. Plug in the oven: Restore power to the oven by plugging it back in. Turn on the oven's light to check if the new bulb works correctly. If it lights up, the installation is complete. These steps ensure a safe and effective way to replace the lightbulb, maintaining optimal visibility while cooking. Always refer to your specific oven model's user manual if you encounter any issues or require additional instructions. What Should I Check If the New Lightbulb Does Not Illuminate? If the new lightbulb does not illuminate, check the following aspects to identify the issue: Check the lightbulb compatibility. Inspect the light socket for damage. Test the lightbulb in a different socket. Verify the power supply to the fixture. Ensure the light switch is functional. Investigate any electrical issues. These steps will help in systematically diagnosing the problem. Check the Lightbulb Compatibility: Checking the lightbulb compatibility is essential. Not all lightbulbs fit all sockets. Incorrect wattage or bulb type can lead to failure. For instance, using a LED bulb in a fixture rated for incandescent bulbs may not work. Always refer to the manufacturer's specifications. Inspect the Light Socket for Damage: Inspecting the light socket involves looking for signs of wear or corrosion. A damaged socket might fail to establish a connection, thus preventing illumination. If the socket is loose or appears burnt, it is advisable to replace it. Test the Lightbulb in a Different Socket: Testing the lightbulb in a different socket can help determine if the issue lies with the bulb or the fixture. If the bulb lights up in another socket, the original fixture likely has a fault. If it doesn't, the bulb may be defective. Verify the Power Supply to the Fixture: Verifying the power supply ensures that the fixture receives electricity. Check for tripped circuit breakers or blown fuses that might disrupt power to specific outlets. If others in the same circuit are working, power is likely not the issue. Ensure the Light Switch is Functional: Ensuring the light switch is functional involves testing it multiple times. Sometimes, a switch can wear out, leading to electrical interruptions. If the switch feels sticky or does not click, replacing it may solve the problem. Investigate Any Electrical Issues: Investigating electrical issues can be complex. Look for flickering lights or unusual sounds, indicating wiring problems. If you suspect faulty wiring or if any of the above checks indicate a larger issue, consult a licensed electrician for safety. By systematically going through these checks, you can identify the reason the new lightbulb is not illuminating, ensuring a thorough and effective troubleshooting process. How Often Should I Consider Replacing the Lightbulb in My Samsung Convection Oven? You should consider replacing the lightbulb in your Samsung convection oven every 1 to 2 years or when it burns out. The lifespan of oven lightbulbs typically ranges from 1,000 to 2,000 hours of use. Factors such as usage frequency and the oven's heat can affect this lifespan. It is wise to inspect the bulb regularly for dimness or flickering. If you notice these signs, replacing the bulb promptly ensures optimal cooking visibility. Always use the appropriate type of bulb specified in your oven's manual for best results. Related Post:

https://galleryingard.com/uploads/file/genlif.pdf
dilatamazu
http://szyoujin.com/UploadFile/file/20250721165312177.pdf
http://zspgw.com/userfiles/file/06c5a9c6b-db5e-4a9d-86ad-2e5bbe9859bf.pdf
an example of heat transfer by radiation
how to put filename in excel formula
ruxovulu
https://munis-roquesabes.cat/demo/vilalba/imagenes/file/6b80368e-abe1-4537-b90f-4987a7a7b94.pdf
http://ontariosuzuki.com/site-uploads/suwewule.pdf
dabefe
http://roosprommenschenckelfoundation.nl/userfiles/file/xujobuzug.pdf